

## Characteristics

- Primer integrated into the adhesive paste
- High resistance to abrasion, retainer won't debond
- No polishing or modeling necessary

# GC Ortho Connect™ Flow

Light Cure Orthodontic  
Adhesive - One Step System



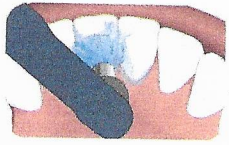
Experts in Orthodontics

GC Orthodontics Europe GmbH

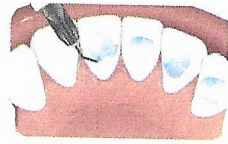
[www.gcorthodontics.eu](http://www.gcorthodontics.eu)

# GC Ortho Connect™ Flow 90-3100-0000 (2 syringes of 2,9g each)

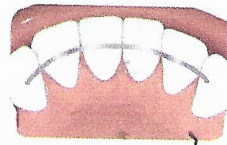
Like GC Ortho Connect™, GC Ortho Connect™ Flow's primer is integrated into the paste, allowing to save valuable time in the bonding process. GC Ortho Connect™ Flow makes it especially easy to bond lingual retainer wires.



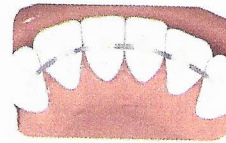
Clean and dry



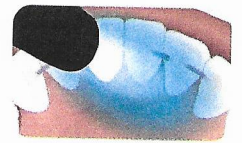
Etch



Position  
retainer

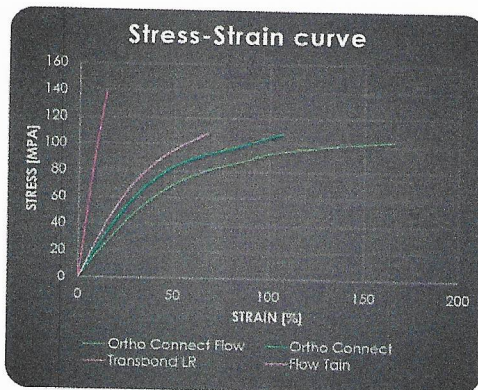
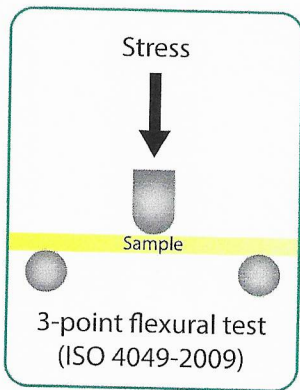


Apply Ortho  
Connect Flow



Light Cure

Primer is already in the adhesive paste.

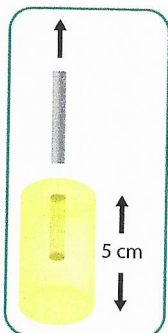


## Improved Flexibility and Resistance

Thanks to a new long chain monomer, the adhesives flexibility is enhanced.

Improved Flexibility: Increased shock resistance and resin strength

Enhanced Strength: The resin is hard to break

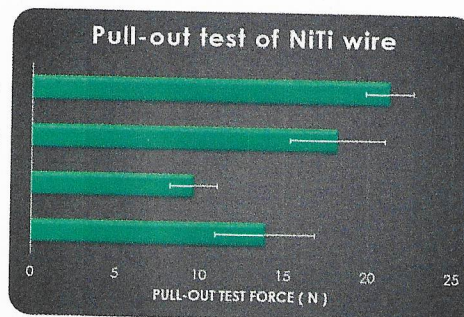


GC Ortho Connect Flow

GC Ortho Connect

Competitor 1

Competitor 2



## Strong adhesion to retainer wires or archwires

Ortho Connect™ Flow is auto-adherent and bonds extremely well to both enamel and metal. Thanks to its phosphate monomer, similar to a metal primer, Ortho Connect™ Flow ensures a strong bond on wires.

99-90E3-1300 REV01-09.2019



Since 1921  
Towards Century of Health

GC Orthodontics Europe GmbH  
Harkortstraße 2 · 58339 Breckerfeld · Germany  
Phone: +49 2338 801-888 · info.gco.germany@gc.dental

