



**RELIANCE<sup>®</sup>**

ORTHODONTIC  
PRODUCTS

RELIANCEORTHODONTICS.COM

**Family Owned.  
Privately Held.  
Domestically Made.**



Made in the U.S.A.





ORTHODONTIC  
PRODUCTS

1540 West Thorndale Ave.  
PO Box 678  
Itasca, IL 60143 USA

1-800-323-4348

Phone: 1-630-773-4009  
Fax: 1-630-250-7704

Please email any questions or comments to  
pgange@RelianceOrthodontics.com -or-  
paulgangejr@RelianceOrthodontics.com

“Reliance is pleased to introduce to the profession the first website dedicated to improving clinical bonding results: **RelianceU.tech**.

Reliance University continues our 40 year commitment to improving orthodontic bonding success. We hope you find it helpful, but if any clarification is desired, please email us direct.”

Best Regards,  
Paul Gange – pgange@relianceorthodontics.com  
Paul Gange Jr. – paulgangejr@relianceorthodontics.com

TERMS AND CONDITIONS

ORDERING

To order Reliance Orthodontic Products, simply contact our home office Toll Free (in U.S. and Canada) at 1-800-323-4348 or 1-630-773-4009. You can also order through our secure website at [www.RelianceOrthodontics.com](http://www.RelianceOrthodontics.com). **There is a minimum of \$25.00 on all orders.**

SHIPPING

All prices are F.O.B. Itasca, and are shipped via FedEx. All shipping is billed with the order. Alternate shipping services are available. Please call for more information.

EXPORT

Export orders must be paid for in advance by proforma invoice.

TERMS

**Net 30 days.** Illinois residents please add 1.75% sales tax. An invoice is enclosed with each shipment and payment should be made from this invoice. Any outstanding balance will be subject to a finance charge of 1.5% per month. All payments are due in U.S. funds

EXCHANGES or REFUNDS

Your satisfaction is Guaranteed! Reliance Orthodontic Products, Inc. guarantees that our products are of the highest quality and workmanship. If at any time prior to its expiration date your adhesive system fails to perform in a manner not consistent with the product, we will replace the remaining product with new material free of charge or issue a credit for the remaining product. **Please check your order for accuracy. Any discrepancies must be reported to Reliance within 7 days.** No refunds, credits or replacement will be issued after 30 days unless the product is deemed defective by Reliance Orthodontic Products, Inc. Products that are being returned to Reliance Orthodontic Products, Inc. must have a prior Return Authorization Number (RMA.) All products being returned for credit or replacement must be sent postage paid with a copy of your invoice and your RMA number clearly visible on the package, or the package will be refused by Reliance Orthodontic Products, Inc. A restocking fee may be applicable.

Table Of Contents

Education . . . . .	3
Adhesion Booster - Protective Sealant . . .	4-5
Light Cure Bracket Adhesives . . . . .	6-7
Band Cements . . . . .	8-9
Chemical Cure Adhesives . . . . .	10-11
Tooth Preparation . . . . .	12-14
Clean-Up & Polishing . . . . .	15
Bonded Lingual Retention . . . . .	16-18
Specialty Procedures . . . . .	19-20
Restorative Solutions . . . . .	21
Indirect Bonding . . . . .	22
Accessories . . . . .	23



All Reliance adhesive products are proudly manufactured in the U.S.A.



RELiance UNIVERSITY

The First Website Dedicated To Bonding Education

Bonding Protocols Explained and Demonstrated

- Refine clinical techniques
- Discover new *pearls*
- Clarify bonding to all surfaces
  - Normal enamel
  - Atypical enamel
  - Stainless
  - Gold
  - Acrylic
  - Porcelain
  - Lithium Disilicate
  - Dentin
  - Cementum
  - Amalgam
  - Pontics
  - Composite
  - Zirconia
- Define product applications
  - Adhesives
  - Sealants
  - Enhancers
  - Etchants
  - Conditioners
  - Cements

Bonding Solutions

- Staff training
- Literature support
- AAO lectures
- Webinars
- Live streams
- Bonding bulletin



RelianceU Homepage



Videos



Studies

<http://RelianceU.tech>

# Assure® Plus

All Surface Light Cure Bonding Primer And Enhancer

## The Most Versatile Resin Ever Developed

- Enhances bond strength on all surfaces
- Tolerates moisture contamination
- Primes and conditions any tooth surface for bonding
- Effective on any enamel type
- Effective on any artificial substrate
- Eliminates hydrofluoric acid with porcelain crowns

## Clinical Applications

- Normal or atypical enamel
- Dentin or cementum
- Eliminates additional conditioners with:
  - Stainless
  - Composite
  - Amalgam
  - Acrylic
  - Gold
  - Pontics
- Eliminates hydrofluoric acid application with:
  - Porcelain\*
  - Zirconia
  - Lithium Disilicate



Available in  
2 or 6 ml bottles



OR  
50/100 ct  
Unidose Packaging

### Order Information

6 ml Assure® Plus All Surface Bonding Resin	#PLUS
2 ml Assure® Plus All Surface Bonding Resin	#PLUS2ML
50 Pack Assure® Plus 0.20 ml Unidose (10 ml)	#UAP50
100 Pack Assure® Plus 0.20 ml Unidose (20 ml)	#UAP100

Note:

\* Porcelain Conditioner appears on page 13

# PRO SEAL® & L.E.D. PRO SEAL®

Light Cure Highly Filled Sealant

## Enamel Protection From Start To Finish

- Two year surface protection
- University tested in over 15 studies and clinically proven
- Sets without oxygen inhibited layer - smooth, hard finish
- Fluoresces under UV light
- Patented catalyst system

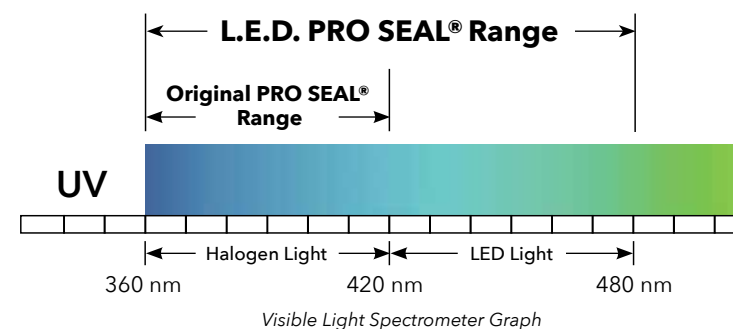
## Clinical Applications

- Routine enamel protection
- Hygiene challenged patients
- Mitigates decalcification
- Can be applied under bracket as a primer or around bracket

Note:

- Pro Seal instructional video available at RELIANCEU.TECH

### Pro Seal® Light Curing Wavelengths



Immediately Before Debond



Immediately After Debond

"I swear by ProSeal to protect my patients' teeth from white spot lesions. The piece of mind it provides is truly invaluable!" - Michael K. DeLuke, DDS, MDS

Original

L.E.D.



Original Pro Seal cures in  
360 to 420 NM range

L.E.D Pro Seal cures with any  
curing light, including L.E.D

### Order Information

6 ml L.E.D. PRO SEAL®	#LEDPRO
6 ml PRO SEAL®	#PRO
UV Disclosing Light	#UVMML

**\*TODAY\***

**ASSURE® PLUS**  
Bonds To All Artificial Surfaces

**\*Strength\***



• One Bottle Does It All

**L.E.D. PRO SEAL®**  
Protects Enamel

**\*Protection\***



• 2 year protection  
• Cures with LED lights

## The Evolution Of Orthodontic Bonding Resins

### Adhesion Boosters



Plastic Conditioner



Metal Primer



Porcelain Conditioner

Chemical Cure Booster



Enhance™  
A & B

Light Cure Booster



Enhance™ L.C.

All Surface Enhancer /Primer



Assure®

1980

1985

1990

2005

2010

Chemical Cure Sealant



Maximum Cure® Sealant

Light Cure Booster



Light Bond™ Sealant

Light Cure Booster



Light Bond™ Filled Sealant

Filled Sealant



PRO SEAL®

### Enamel Protective Sealants



GoTo®

Light Cure Bracket Adhesive

Newly Developed - Superior Working Properties

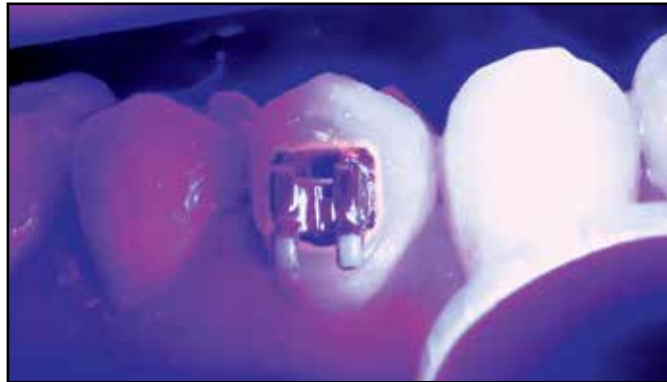
- Proven bond strength and consistency
- Unique viscosity easily penetrates bracket pads
- No bracket drift - stays in place until cured
- New proprietary microfiller construction
- One piece flash removal - "ropes" off bracket periphery
- Translucent finish matches any tooth shade
- Maximum bond strength
- Easy removal and cleanup
- UV disclosing agent - fluoresces on tooth

Clinical Applications

- Bracket and tube bonding
- Fixed lingual retainer bonding
- Bonds all metal, ceramic and composite attachments



Translucent



Blacklight Fluorescent

**Note:**  
- Etchants and Conditioners appear on page 13  
- Bonding Accessories appear on page 23

Now Fluoresces Under Black Light for Complete Cleanup!



Push Syringe



Syringe Tips

Recommended primer with GoTo® Adhesive is Assure® Plus



Order Information

4 g Paste Syringe	#GTP
4 g Paste In Tips	#GTT

Light Bond™

Light Cure Bracket Adhesive



Push Syringe

Syringe Tips

Light Bond™ Order Information

Recommended primer with Light Bond™ Adhesive is Assure® Plus



Light Bond™ Paste In Syringe

All syringe applicators contain 5 g of paste w/fluoride

Paste Choices	Applicator Choices	
	Push Syringe	Syringe Tips
Regular Viscosity Syringe*	#LBPPF	#LBPTF
Medium Viscosity Syringe	#LBMPFF	#LBMP TF
Thin Viscosity Syringe	#LBTPPF	#LBTP TF
Blue Tinted Syringe	#LBBPPF	#LBBPTF

\* Most Popular Choice

Light Bond™ Kit

Light Bond™ kit includes:

- 20 g Paste w/Fluoride
- 23 g Liquid Etchant
- 2 x 3cc Sealant Resin
- Mixing Pads, Spatulas & Brushes

Push Syringe Kit

Regular With Sealant Resin	#LBEPF
Regular With Assure Plus	#LBEPF W/PLUS

Time Tested Performance

- Unrivaled bond strength
- Highly filled paste
- Smooth tacky viscosity
- Consistent successful bonds
- Easy flash and debonding cleanup
- Designed for Doctor or staff bracket placement without drift

Clinical Applications

- Routine bracket and tube bonding
- Intraoral bonding of metal, ceramic or composite attachments
- Indirect bonding to stone/resin models

**Note:**  
- Light Bond sealant appears on page 13  
- Etchants and Conditioners appear on page 13  
- Bonding Accessories appear on page 23  
- Light Bond™ kit and components available without fluoride upon request

Pad Lock®

Light Cure Fluorescing Adhesive

Bonds Chemically and Mechanically

- Bonds chemically to metal bases
- Paste fluoresces under black light for flash and debonding cleanup

Clinical Applications

- Metal bracket and tube bonds
- Indicated for fine grade mesh bases
- Non-fluoride upon request



Order Information

Pad Lock® Push Syringe Kit with fluoride*	#PLPKF
Pad Lock® Push Syringe Kit with Assure	#PLPKFAS
4.5 g Pad Lock® Paste in Push Syringe with fluoride	#PLPF
4.5 g Pad Lock® Paste in Tips with fluoride	#PLTF

\* Pad Lock® kits include:

- 20 g Paste w/Fluoride
- 23 g Liquid Etchant
- 2 x 3cc Sealant Resin
- Mixing Pads, Spatulas & Brushes



# Ultra Band-Lok®

Light Cure Compomer Band Cement



Push Syringe

### Industry Leader in Band Cement

- **SINGLE PASTE SYSTEM**
- **LIGHT ACTIVATED**
- **RESIN BASE GLASS IONOMER**  
High fluoride release
- **NATURAL OR BLUE SHADE**
- **BONDS TO METAL**  
Ultra Band-Lok® will bond chemically to stainless steel bands. Removal is all in one piece with cement in the appliance, making cleanup effortless.
- **ALL PURPOSE CEMENT**  
Ultra Band-Lok® can also be used to bond large acrylic appliances and as an occlusal build-up material.

### Clinical Applications

- Band cementation
- Occlusal build ups  
- Occlusal build up instructional video available at RelianceU.tech
- Acrylic appliances - Hyrax, MARA, RPE, etc.  
- Acrylic Appliance instructional video available at RelianceU.tech
- Lab block out material
- Non-fluoride upon request

### Order Information

5 g Ultra Band-Lok® Syringe	#UBLPP
5 g Ultra Band-Lok® Syringe Blue shade	#UBLBPP
5 g Ultra Band-Lok® Luer Loc Syringe w/Dispensing Tips	#LLUBLP
5 g Ultra Band-Lok® Luer Loc Syringe Blue shade w/Dispensing Tips	#LLUBLBP
(50) Luer Loc Dispensing Tips	#TIPS50
(5) Luer Loc Dispensing Tips	#TIPS5

### ALSO AVAILABLE IN LUER LOC SYRINGE



Simplified Cleanup



Occlusal Buildup

# Band Lok® Dual Cure

Mix Paste Band Cement

## The Original, Time-Tested Compomer Band Cement

- Bonds chemically to bands  
- Secure band cementation  
- Easy, clean removal
- Self mix dual syringes  
- Tips mix and dispense paste  
- Proportional paste mix  
- Eliminates spatulating
- Dual cure - light and/or chemical  
- Four minute working time  
- Complete polymerization every time
- Natural or blue shade
- Contains fluoride \*



### Band Lok® Dual Cure Order Information

<b>Dual Syringes:</b> • 5gm Paste A / 5gm Paste B (Includes 15 Self Mix Tips)	Natural Shade	#SMBL
	Blue Shade	#SMBLB
Self Mix Tips (15)		#SMT
Screw Syringes: 6gm Paste		
Paste A Syringe	Natural Shade	#BLSA
	Blue Shade	#BLSAB
Paste B Syringe		#BLSB

Note:  
\* Band Lok® is available without fluoride upon request

# Crown Lok™

Metal Crown Luting Cement

## Secure Metal Crown and Band Cementation

- Bonds chemically to stainless steel
- Simplified removal and cleanup
- Two minute working time
- Syringe choices  
- Screw syringe  
- Dual syringe - self mix  
- Tips mix and dispense paste  
- Proportional paste mix  
- Eliminates spatulating
- Natural or blue shade
- Contains fluoride



### Crown Lok™ Order Information

<b>Dual Syringes:</b> • 5gm Paste A / 5gm Paste B • 15 Self Mix Tips	Blue Shade	#SMCLB
Self Mix Tips (15)		#SMT
Screw Syringes: 5gm Paste		
Paste A Syringe	Natural Shade	#CLSA
	Blue Shade	#CLSAB
Paste B Syringe		#CLSB

# Glass Lok™

COMING IN 2020!

Dual Cure Glass Ionomer Band Cement

## Hydrophilic Powder /Liquid Cement

- Secure band adhesion
- High compressive and tensile strength
- Bonds in wet or dry fields
- Resists washout from under bands
- Contains fluoride - protects enamel
- Bonds chemically to metal, reducing removal cleanup time
- Dual cure - chemical or light activated
- Natural or blue shade



### Glass Lok Order Information

Glass Lok® Natural Shade Starter Kit*	#GLS
Glass Lok® Blue Shade Starter Kit*	#GLSB
Glass Lok® Natural Shade Economy Kit*	#GLE
Glass Lok® Powder (15 g)	#GLP15
Glass Lok® Powder - Economy Size (100 g)	#GLP100
Glass Lok® Liquid Natural Shade (15 g)	#GLL15
Glass Lok® Liquid Natural Shade Economy Size (25 g)	#GLL25
Glass Lok® Liquid Blue Shade (15 g)	#GLL15B

\* Glass Lok® Sarter Kit includes:  
• 15 g Powder • Spatulas • Measuring Scoop  
• 15 cc Liquid • Mixing Pads

\* Glass Lok® Economy Kit includes:  
• 100 g Powder • Spatulas • Measuring Scoop  
• (3) 25g Liquid • Mixing Pads

# Phase II®

Mix Paste Bracket Adhesive – Chemical Cure

### Time Tested Consistency

- Microfilled paste
  - Unrivalled strength
  - Smooth, tacky viscosity
  - No bracket drift
- Self curing
  - Full polymerization
  - A&B mix system
  - 2 minute working time
- Easy removal and cleanup
- Contains fluoride

### Clinical Applications

- Routine clinical bonding
- Bracket and tube bonding



# Phase II® Dual Cure

Mix Paste Bracket Adhesive – Combines Chemical and Light Curing


### Speed of Light Cure / Security of Chemical Cure

- Initial light cure option
  - 10 second exposure tacks bracket in position
  - Allows quick and accurate positioning
- Chemical cure - time activated
  - 4 minute working time
  - Total polymerization under bases
- Contains fluoride



**Note:**  
- Kits and components available w/o fluoride  
- Etchants & conditioners appear on page 13  
- Bonding accessories appear on page 23

Phase II® Order Information	
Paste Components	
Paste A 6 g Syringe	#1PSAF
<b>Dual Cure</b> Paste A 6 g Syringe	#1DCSAF
Paste B 6 g Syringe	#1PSB
Paste A 18 g Jar	#PJAF
<b>Dual Cure</b> Paste A 18 g Jar	#DCJAF
Paste B 18 g Jar	#PJB

Recommended primer with Phase II® Adhesive is Assure® Plus	
	
Order Information	
6 ml Assure® Plus	#PLUS

### Phase II® Kits

All Phase II® kits include:

- 18g Each A&B Paste
- 7g Each A&B Resin
- 9g Etchant
- Spatulas, Applicators, Brushes, Mixing Well

Kits	
Syringe Kit	#PSF
Jar Kit	#PJF

# Excel®

Chemical Cure Specialty Adhesive

- Unsurpassed bond strength
- Thin, creamy consistency
- Extended working time
- Contains fluoride

### Clinical Applications

- Indirect bonding adhesive
- Bonded acrylic appliances



**Note:**  
- Excel® Paste available w/o fluoride on request

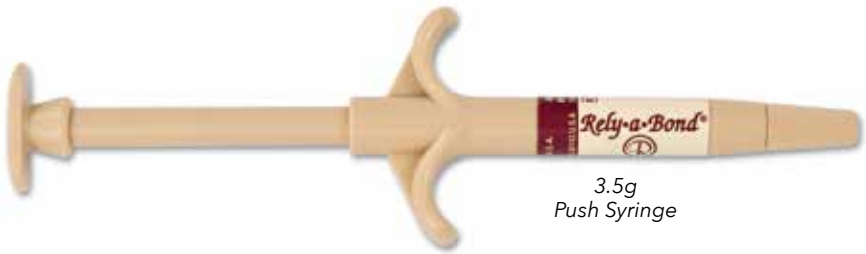
Order Information	
Excel® Regular Paste A in 6 g Screw Syringe with fluoride	#1ERSAF
Excel® Regular Paste B in 6 g Screw Syringe	#1ERSB

# Rely•a•Bond®

No Mix Bracket Adhesive

### 1 Step/Contact Adhesive

- Contact cure - primer to paste
- Chemical cure - no light required
- Saves time and material
  - No mixing
  - Minimizes adhesive per bond
- Highly filled paste
  - Increased bond strength
  - Tacky viscosity
  - Prevents bracket drift
- Choice of packaging
  - Push syringe
  - Syringe tips
  - Jars
- Contains fluoride



### Rely•a•Bond® Kits

All Rely•a•Bond® kits include:

- 14g Paste
- 9g Etchant
- 16g Primer
- Spatulas, Brushes & Mixing Pads

Rely•a•Bond® Order Information	
Components	Kits
3.5 g Paste In Syringe	#1RPP
14 g Paste In Tips	#RPT
14 g Paste In Jar	#RPJ
16 g Primer	#RPRF

Paste In Syringes	#RPF
Paste In Tips	#RTF
Paste In Jars	#RJF

**Note:**  
- Kits and components available w/o fluoride on request



## Etchmaster®

Microetch System

### Microetching Made Clean And Efficient

- Precise surface microetching
  - Increases surface retention
  - Insures properly prepped surface
  - Maximizes bond strength on all surfaces
- Preloaded cartridge tips
  - Disposable, no-mess application
  - No alumina oxide management
  - 50 micron alumina oxide
  - 2 tip sizes: Small (6 teeth) or Large (18 teeth)
- 4 Hole Handpiece
  - Standard airline attachment
  - Easy chairside engagement
  - Stainless steel construction

### Clinical Applications

- Lingual bonding
- Artificial substrate bonding
- Molar prep for bonds or bands



Surface Microetching

## ASK®

All Surface Bond Enhancement Kit

### Preps Any Artificial Substrate

- MAXIMUM BOND STRENGTH WITH NO ADDITIONAL PRIMERS**
  - Wet or dry, normal or atypical enamel, composite, metal, porcelain, acrylic and zirconia

#### Order Information

### ASK® Kit

- ASK® kit includes:
- 6 ml Assure® Plus
  - 8 cc Porcelain Conditioner
  - 1 Etchmaster® Handpiece
  - (5) Preloaded Small Lingual Tips
  - (5) Preloaded Small Regular Tips

#### ASK® Kits

ASK® Kit #ASK



Porcelain Conditioner

Assure® Plus

Etchmaster® Handpiece



#### Regular Tips

Small

Large

#### Lingual Tips

Small

Large

#### Order Information

### Etchmaster® Starter Kit

Etchmaster Handpiece Starter kit includes:

- 4 Hole Handpiece Attachment
- (5) Regular Small Alumina Oxide Tips
- (5) Lingual Small Alumina Oxide Tips

#### Starter Kit

Etchmaster Starter Kit	#EMHA
Small Tips	Large Tips
Regular Tips 25 Pk #EMTRS	Regular Tips 25 Pk #EMTRL
Lingual Tips 25 Pk #EMTLS	Lingual Tips 25 Pk #EMTLL
Regular Tips 50 Pk #EMTRS50	* 90 Micron 25 Pk #EMTRL90
Lingual Tips 50 Pk #EMTLS50	* Recommended for removing composite from bracket bases and microetching stainless steel appliances. Not recommended for use on enamel.

## Blue Gel Etchant

- Controlled and even application
- 37% phosphoric acid
- Excellent for lingual retention (page 16) or large acrylic appliances (page 19)
- Contains anti microbial B. A. C.



#### Order Information

Contains 5 g syringe Gel Etchant with 10 tips #BEGS

## Liquid Etchant

- 37% phosphoric acid
- Green disclosing tint
- Regular or cherry flavor

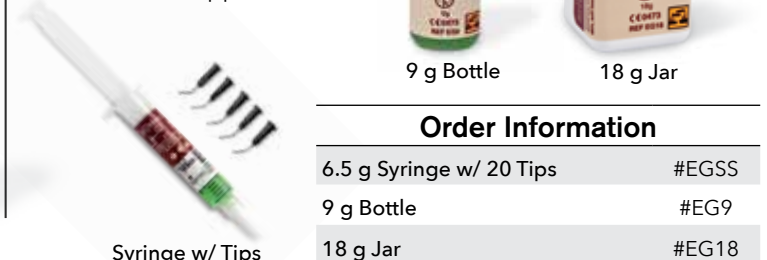


#### Order Information

9 g Bottle	#EL9
23 g Bottle	#EL24
23 g Cherry Flavor	#EL24C

## Gel Etchant

- 37% phosphoric acid
- Controlled application



#### Order Information

6.5 g Syringe w/ 20 Tips	#EGSS
9 g Bottle	#EG9
18 g Jar	#EG18

## Porcelain Conditioner

For Bonding to Ceramic Crowns

- Effective with: porcelain, zirconia and lithium disilicate

Note:

- Ceramic bonding instructional video available at RelianceU.tech

#### Order Information

8 cc Porcelain Conditioner	#PO
----------------------------	-----



## Porc Etch™

Porcelain Etching Agent with Barrier Gel

- Preps porcelain crowns for bonding

#### Order Information

7 g Porc-Etch™ w/Barrier Gel	#POE
------------------------------	------



PLASTIC CONDITIONER APPEARS ON PAGE 19

## Assure®

The Original Universal Bonding Resin

- Bonding primer and enhancer
- Typical or atypical enamel
- Metal and composite restorations



#### Order Information

6 ml Assure® Universal Bonding Resin	#AS
2 ml Assure® Universal Bonding Resin	#AS2ML

## Light Bond™ Sealant

Light Cure Resin

- Bonding primer and sealant
- Available with or without quartz filler



#### Order Information

Bottle Volume	Regular	Filled
3 g	#LBS3F	#LBFSF
7 g	#LBS7F	#LBFS7F



## Prep Step™

Disposable Prophyl Angle

144 individually wrapped and disposable Prep Step™ Prophyl Angles are manufactured to run smooth and vibration free. Latex free, 4 web and soft cup are designed to fit a slow speed hand piece. Just throw away after use!



### Order Information

Prep Step™ 144 Prophyl Angles	#DPA
-------------------------------	------

## Reliance S.E.P.™

Self Etching Primer

- Etchant and bonding primer
- One step application
- Click-syringe dispenses pre-measured amounts
- Each dispensing click conditions 12-14 teeth
- No need to etch before applying S.E.P.



### Order Information

S.E.P™ Kit (contains all components)	#SEPPRO
Refill Cartridges (4 ml)	#SEPR
Click Syringe Dispenser	#SEPD
Mixing Well w/Light Impervious Shield	#1SEPW

## STEP 1

## Bulk Composite Reduction

### RENEW® FINISHING BURS

#### Renew® Bur 118S



Renew® Bur 118S	#RSB
-----------------	------

#### Renew® Bur 218



Renew® Bur 218	#RSB2
----------------	-------

#### Renew® Bur 118L



Renew® Bur 118L	#RSBL
-----------------	-------

#### Renew® Bur 815



Renew® Lingual Bur 815	#RSB815
------------------------	---------

## STEP 2

## Residual Composite Removal

### RENEW® FINISHING POINTS

- Polishes tooth surface
- Removes residual composite
- Black point discloses when composite is fully removed
- Does not create heat

#### Straight Hand Piece



Straight Hand Piece pack of 12	#RSPHP
--------------------------------	--------

#### Latch



Latch pack of 12	#RSPL
------------------	-------

#### Friction Grip



Friction Grip pack of 12	#RSPFG
--------------------------	--------

## STEP 3

## Finishing & Polishing

### 1st & Final®

Pre-Packaged Orthodontic Pumice



- Pre-packaged - sterile cups for individual patient use. Pre-mixed - just open and apply with prophyl cup.
- No added chemicals - no flavoring, fluoride or oils.
- Enamel polisher - 1st & Final® can be used as the final polishing step with the Reliance Renew™ Finishing System.

### Order Information

1st & Final® 200 Sterile Cups	#FF
-------------------------------	-----

### Restore™

Diamond Polishing Paste for restoration of glaze on artificial surfaces



### Order Information

2 g Syringe Restore™	#RESPP2
----------------------	---------

## L.C.R.<sup>™</sup> Light Cure Retainer Adhesive

- Micro+ nano fill for flowable consistency with durability of highly filled composite
- Smooth viscosity
- Cures to a glassy finish
- Patient comfort – reduced wear
- Developed for BLR applications



Order Information	
5 g L.C.R. <sup>™</sup> Paste in Push Syringe	#LCR
1.5 g L.C.R. <sup>™</sup> Paste in Push Syringe w/Tips	#LCR15
5 g L.C.R. <sup>™</sup> Paste in Tips (11)	#LCRT5

## GoTo<sup>®</sup> Light Cure Bracket Adhesive

### BLR Application

- Good working viscosity
- Increased strength



Order Information	
4 g Paste Syringe	#GTP
4 g Paste In Tips	#GTT

SEE FULL DESCRIPTION ON PAGE 6

## Flow Tain<sup>™</sup> Light Cure Flowable Composite

### BLR Application

- Thixotropic viscosity
- Cures glassy smooth
- Slumps over wire
- Fluoresces w/blacklight



Order Information	
1.5 g Flow Tain <sup>™</sup> With Tips (10)	#FT
19 Gauge Tips (10)	#19TIPS10

SEE FULL DESCRIPTION ON PAGE 22

## Assure<sup>®</sup> Plus Bonding Primer And Enhancer



### BLR Application

- Enhances bond strength
- Overcomes mild contamination

Order Information	
6 ml Assure <sup>®</sup> Plus All Surface Bonding Resin	#PLUS
2 ml Assure <sup>®</sup> Plus All Surface Bonding Resin	#PLUS2ML
50 Pack Assure <sup>®</sup> Plus 0.20 ml Unidose (10 ml)	#UAP50
100 Pack Assure <sup>®</sup> Plus 0.20 ml Unidose (20 ml)	#UAP100

SEE FULL DESCRIPTION ON PAGE 4

## Etchmaster<sup>®</sup> Handpiece Portable Chairside Microetcher

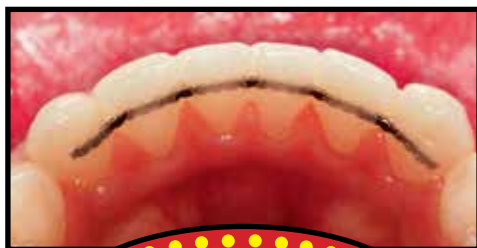
### BLR Application

- Mechanically prepares tooth surface

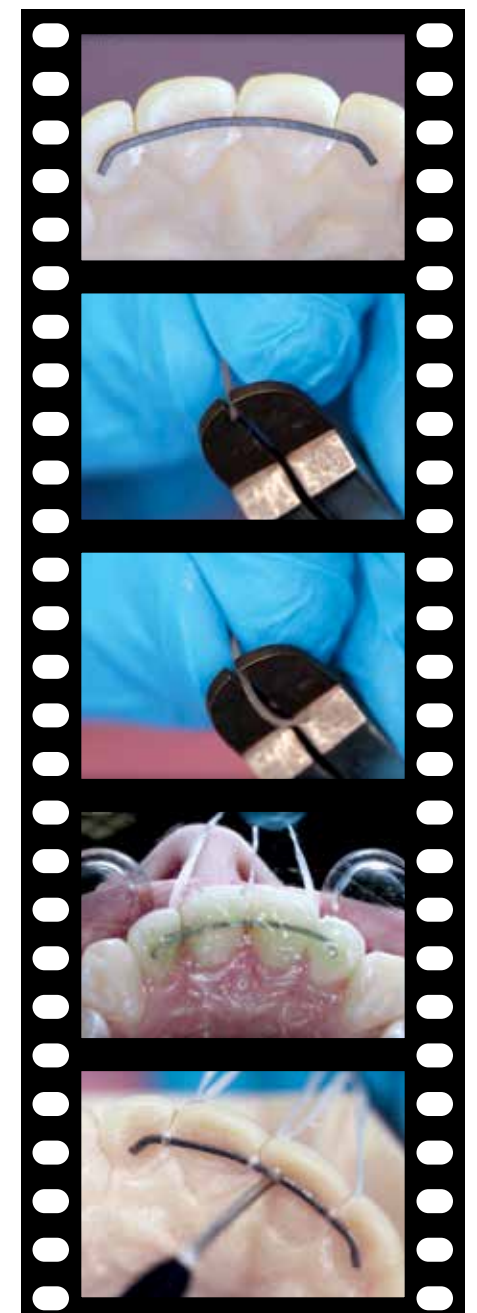


Order Information	
Etchmaster Starter Kit	#EMHA

SEE FULL DESCRIPTION ON PAGE 12



See  
Video Instruction  
for Lingual Retainer Bonding  
at the Reliance University website:  
**RelianceU.tech**



## Ortho FlexTech<sup>®</sup> Flexible Lingual Retainer

Stainless Steel or White Gold

### A New Generation in Fixed Retention

- Secure and stable long term **passive** retention
- Patented interlocking chain design
- Adapts to lingual anatomy
  - No bending or burnishing
- No models or impressions
- Flexes interproximally
  - Resists breakage and bond failures
- No reciprocal forces – allows for minor biological movement – will not take an active bend
- Stainless steel offers increased tensile and torsional strength
- Different material choices
  - White Gold (original)
  - Nickel Free Gold
  - Nickel Free Gold – etched
  - Stainless Steel – increased strength
- Low profile – patient comfort



Patent #5964589



### Clinical Applications

- 3 to 3 retention
- Periodontal splinting

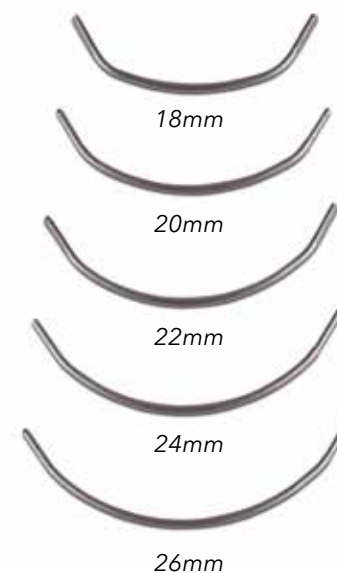
Note: Ortho Flex Tech instructional video available at RelianceU.tech

## EXTEND<sup>®</sup> LTR

Retention With Two Bond Points

### 3 to 3 Lingual Retention

- Titanium molybdenum wire
- Low profile 027 TMA wire
- Can be bonded to all 6 anteriors or to cuspids only
- Flattened and serated cuspid pads
- Preformed with cuspid offsets
- Hygiene friendly
- Nickel free



### Order Information

## EXTEND<sup>®</sup> LTR Starter Kit

EXTEND<sup>®</sup> LTR kit includes:

- (5) 18mm wire
- (5) 20mm wire
- (5) 22mm wire
- (5) 24mm wire
- (5) 26mm wire
- (25) Arch Measuring Devices

Starter Kit		
Extend <sup>®</sup> LTR Starter Kit		#EXK
Individual Components		
5 Retainers/Pkg		
18mm #EX18	22mm #EX22	26mm #EX26
20mm #EX20	24mm #EX24	Measure Device (1) #EXMD



## RETAINIUM® XL

Optimum Strength Beta Titanium Retainer Wire

### Fixed Retention with Titanium Molybdenum

- Flat .027" x .016" ribbon arch
- Low profile - comfortable and functional
- Increased strength
- MRI compatible
- Easy adaptation
- Nickel free titanium construction

### Clinical Applications

- Fixed lingual retention
- Space maintenance
- Diastema maintenance
- Splinting



### Order Information

Retainium XL - (10) 6" Wires #XLRET

## RETAINIUM®

Original TM Alloy Retainer Wire

### Lingual Titainium Molybdenum Retention

- Lowest profile
- Flexes Interproximally
- .027" x .011" ribbon arch
- Nickel free
- Adaptability
- MRI compatible

### Clinical Applications

- Fixed lingual retention



### Order Information

Retainium - (10) 6" Wires #RET

## Bond•A•Braid®

Lingual Retainer Wire

The dead soft wire easily adapts and is excellent for semi-permanent orthodontic splinting of the upper and lower incisors, diastema maintenance and other tooth splinting

- Lingual retainer
- .027" x .011" ribbon arch wire
- 8-strand braided wire
- Dead soft - adapts easily



### Order Information

Bond•a•Braid® 10 (6") Wires #BAB2

## Acrylic Appliance Bonding

Expanders | Herbst | Hyrax | Mara



### PRE-DELIVERY PREP

#### Blue Gel Etch

Syringe Applicator with Tips

- Controlled application around buccolingual circumference



- Order #BEGS

**Full Description on page 13**

#### Assure® Plus

All Surface Primer

- The only primer that bonds to deciduous enamel



- Order #PLUS

**Full Description on page 4**

#### Plastic Conditioner

Acrylic Prep

- Initiates bond between appliance and adhesive
- 10 g bottle



- Order #PL

### CEMENTS

#### Band Lok® Dual Cure\*

Self Mix Syringe

- Order #SMBL - Natural
- Order #SMBLB - Blue

**Full Description on page 9**



#### Ultra Band-Lok®

Light Cure

- Order #UBLPP - Natural
- Order #UBLBPP - Blue

**Full Description on page 8**



#### Excel®

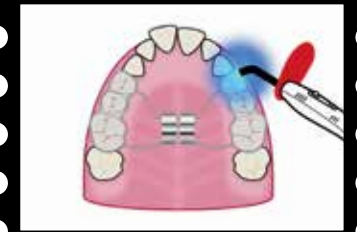
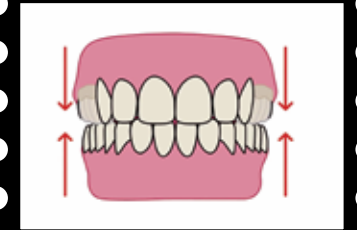
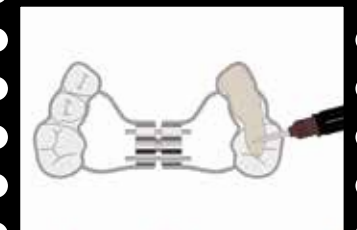
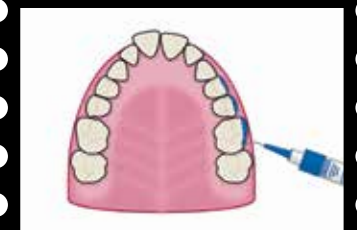
Chemical Cure

- Order #1ERSAF & 1ERSB

**Full Description on page 11**



See  
**Video Instruction**  
for Acrylic Appliance Bonding  
at the Reliance University website:  
**RelianceU.tech**





## Bond Aligner®

Light Cure Aligner Adhesive

### Bonds Attachments To Clear Aligners

- Secure aesthetic bonds
- Bond to any clear aligner material
- No primers or conditioners
- Clear light cure paste
- High modulus of elasticity
  - Conforms to aligner distortions
  - Secure bonds throughout
- Bond ceramic, metal or plastic attachments

### Clinical Applications

- Button or hook bonding to aligners
- Facilitates elastic engagement to aligners



### Order Information

1.4 g Bond Aligner® Syringe With 5 Tips #BA

### Button Hook

- Mini Mold® button form
- Effective With Aligners
- Aesthetic Solution To Metal Button



### Button Hook Attachment

Sold Individually  
#ABUT

## O.V.S.™

Orthodontic Veneer System



Before OVS Treatment



After OVS Treatment

### OVS Kit

OVS Kit #OVS

### All O.V.S.™ Kits include:

Faci Form Crown Form #12 Left (5 med & 5 large) #FFL

Faci Form Crown Form #22 Right (5 med & 5 large) #FFR

2.5 g Ortho Veneer™ Paste Shade A-1 #OVPA1

2.5 g Ortho Veneer™ Paste Shade A-2 #OVPA2

2.5 g Ortho Veneer™ Paste Shade B-1 #OVPA3

3 cc Light Bond™ Sealant #LBS3F

(16) Stick-n-Place instruments #SNP16

### Peg Lateral Treatment

Orthodontic cases often present the need to bond an attachment to a peg lateral or an undersized tooth. O.V.S.™ provides a complete in-office system that creates an aesthetic and properly sized temporary veneer suitable for bonding. This saves you and your patients time during treatment and money by eliminating the need for a full temporary crown. *Not available in Canada.*

## C&C™ Composite and Chain System

Molded Base And Chain Extrusion System



### Product Features

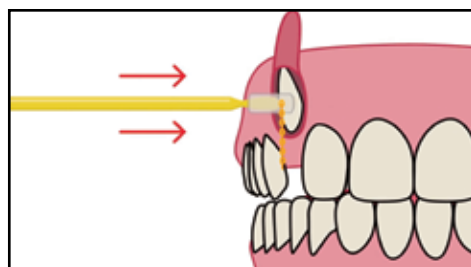
#### • UNPARALLELED STRENGTH

The **C&C™** System does not use protruding metal attachments. Our patent pending design molds a base with composite - adapting flush to any palatal or buccal exposure.



#### • PAINLESS REMOVAL

Instead of painfully breaking a bracket off a mobile tooth - the **C&C™** is ground down with a bur - resulting in less patient discomfort.



### Note:

- C&C instructional video available at [RelianceU.tech](http://RelianceU.tech)

### Order Information

1 Disposable Large Attachment Mold with Chain #DCCP

1 Disposable Small Attachment Mold with Chain #DCCO

1.5 g FlowTain™ Flowable Composite #FT

## Perfect•A•Smile® Pontic Paint

Immediate Restorations And Space Maintenance

### Quick and Economical Aesthetic Solution

- Light cure paste in 10 shades
- Applies smoothly to clear aligner sockets
- Translucent to match enamel
- High elasticity modulus
  - Will not crack or splinter
- Bonds to any clear aligner
- Quick and economical
  - Same day fix
  - No doctor chairtime
  - No lab fees or delays
- Complete in-office system
- Easy temporary bridge

Actual  
Treatment  
Photos



### Clinical Applications

- Eliminates flippers
- Temporary restorations
  - Congenital, trauma
  - Pre-pontic, peg laterals
  - Grafting, implants
- Space maintenance
- Aesthetic restorations
  - Single tooth
  - Partial arch



### Note:

- Pontic Paint instructional video available at [RelianceU.tech](http://RelianceU.tech)

### Order Information

Most Popular Shades: A2, B1, D3 and C4

### Applicators Included With Each Jar

4 g Jar PP/Bleach #PPBL

4 g Jar PP/A1 Shade #PPA1

4 g Jar PP/A2 Shade #PPA2

4 g Jar PP/A3.5 Shade #PPA35

4 g Jar PP/B1 Shade #PPB1

4 g Jar PP/C1 Shade #PPC1

4 g Jar PP/C4 Shade #PPC4

4 g Jar PP/D3 Shade #PPD3

4 g Jar PP/Light Shade #PASL

4 g Jar PP/Medium Shade #PASM

Super Fine Micro Brushes (100) #MBSF

### Vita Shade Guide References

Manufactured under U.S. Patent Number #8864493 B2

## Perfect•A•Smile® Pontic Putty

Light Cure Formable Paste

### Fingertip Pontic Fabrication

- Light cure composite paste
- Putty-like consistency
- Facilitates tooth shape formation
- Eliminates pontics, wax & PVS
- Bonds tenaciously to stone/resin models
- Provides proper clear aligner anatomy

### Clinical Applications

- Pontic formation by hand
- Bridges/fills gaps in model
- Facilitates proper aligner formation



### Order Information

5 g Paste In Syringe

#LBOPS



Custom Base Model Adhesives

**Therma-Cure™**  
Heat Curable Lab Adhesive for Custom Base Indirect Bonding

- Tacky Paste Viscosity
- Unlimited Working Time
- Heat Curable
- Highly Filled Composite



5 g Therma-Cure™ Syringe #TC

**Light Bond™ Adhesive**  
Light Cure Bracket Adhesive

- For bonding to model
- Viscous paste to eliminate drift




SEE FULL DESCRIPTION ON PAGE 7

5 g Light Bond™ Paste in Push Syringe with fluoride #LBPPF

Custom Base Transfer Adhesives

**Flow Tain™**  
Light Cure Flowable Microfil Composite



- Needle Tip Dispenser
  - Using the tips provided, these materials are easily injected onto custom pads
- Low modulus of elasticity to resist breakage
- Highly filled to bridge gaps between custom pads and tooth surface

Order Information	
1.5 g Flow Tain™ with Tips	#FT
19 gauge Tips (10)	#19TIPS10

**Maximum Cure® Sealant**  
Indirect Bonding Sealant

- 90 Second working time
- Excellent molecular conversion rate
- Self curing



**REFRIGERATION REQUIRED**

7 g Maximum Cure® Sealant A with fluoride	#MC7AF
7 g Maximum Cure® Sealant B	#MC7B
7 g Maximum Cure® Filled Sealant A with fluoride	#MCF7AF
7 g Maximum Cure® Filled Sealant B	#MCF7B
20 g Maximum Cure® Sealant A with fluoride	#MC20AF
20 g Maximum Cure® Sealant B	#MC20B

Clean Base Transfer Adhesives

**Excel®**  
Chemical Cure Specialty Adhesive

- Unsurpassed bond strength
- Thin, creamy consistency
- Facilitates clean base penetration
- Three minute working time
- Contains fluoride



Paste A

Paste B

Excel® Regular Paste A in 6 g Screw Syringe with fluoride	#1ERSAF
Excel® Regular Paste B in 6 g Screw Syringe	#1ERSB

**Light Bond™ Thin Adhesive**

- Low viscosity paste
- Facilitates clean base penetration
- Micro filled composite
- Light cure - no mixing




5 g Light Bond™ Thin Syringe #LBTPPF

**Disposable Benda Brushes**  
• Sealant and enhancer applicators



4" Benda Brushes (250) #4BB250

**Brush Handle And Tips**



Brush Handle #BH

Brush Tips (250) #BT250

**Sponge Pellets**  
• Etchant applicators



Sponge Pellets (500) #SP

**Micro Brushes**



Micro Brushes (100) #MB

Super Fine Micro Brushes (100) #MBSF

**Nylon Mixing Spatulas**



Spatulas (50) #S

**Mixing Pads**



Disposable Mixing Pads (1) #1PADS

**Mixing Well**




Mixing Well #1MXW

**S.E.P. Mixing Well**



S.E.P. Mixing Well with Light Impervious Shield #1SEPW

**Mark II CR Syringe**  
• Used with pre-loaded adhesive tips



Mark II CR Syringe #CRII

**UVEX Eyewear**  
• Fits over prescription eyeglasses



Uvex Ultra Spec® 2000

Uvex Ultra Spec® 2000 #SGU

**Skyper® Eyewear**  
• Low profile



Uvex Skyper®

Uvex Skyper® #SG

**Diamond Bur 129**  
• Prep bur  
• Roughens surface



Other burs appear on page 15

Diamond Bur 129 #DB

**Access™ Retractor**  
• Sterilize with dry heat or autoclave



Access™ Adult Cheek Retractor #CH1

Access™ Pado Cheek Retractor #CH2

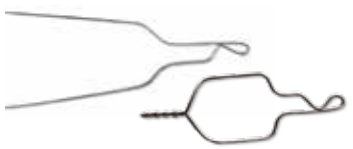
**Technique Cards**  
• Chairside reference for all bonding scenarios



This item is non-returnable

Chairside Bonding Technique Cards #TECH

**Kobayashi Ties**



Tie Hooks - .010 100/Pkg	#K10
Tie Hooks - .012 100/Pkg	#K12
Tie Hooks - .014 100/Pkg	#K14
Pre-Twisted - .012 100/Pkg	#SK12
Pre-Twisted - .014 100/Pkg	#SK14

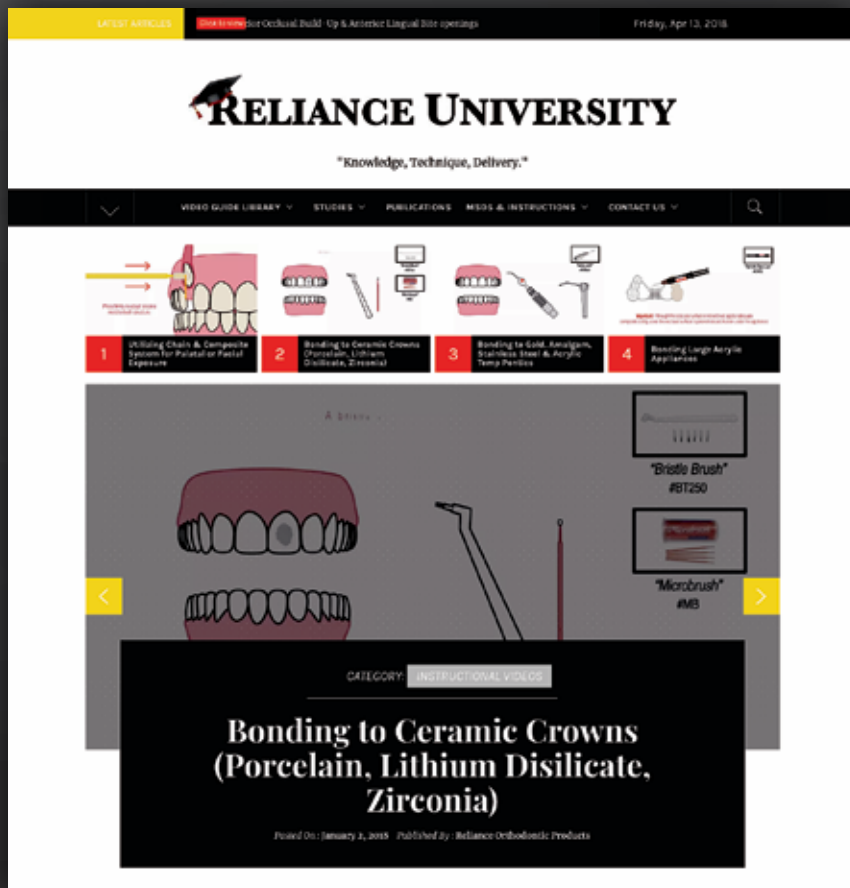


# RELIANCE UNIVERSITY

<http://RelianceU.tech>

## SCHOOLS IN SESSION!

FIRST OF ITS KIND ORTHODONTIC EDUCATIONAL AND TRAINING GUIDE



TRAINING VIDEOS

LITERATURE SUPPORT

WEBINARS & LIVESTREAMS

SCIENTIFIC STUDIES

LOG IN NOW!

[HTTP://RELIANCEU.TECH](http://RELIANCEU.TECH)



© 2020 Reliance Orthodontic Products  
Version 12



US FDA  
REGISTERED

Certificates available upon request

Health Canada  
REGISTERED

