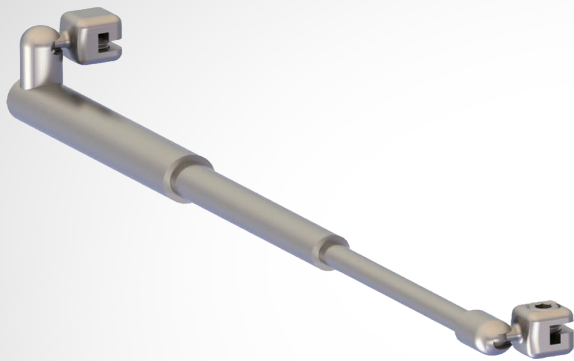




# BioBiteCorrector®

The mandibular protrusion hinge

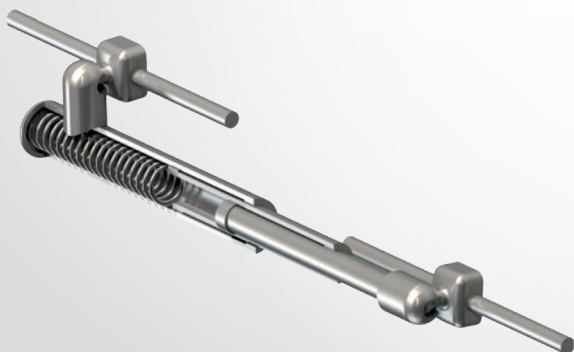
BioBiteCorrector® MS



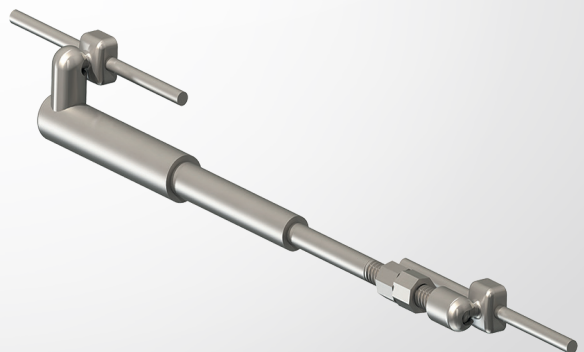
BioBiteCorrector® SP



BioBiteCorrector® FA



BioBiteCorrector® SA



## BioBiteCorrector® Applications

**The BioBiteCorrector® Hinge is a versatile mandibular protrusion hinge designed for the following BBC applications:**

- Treatment of Temporomandibular joint diseases
- Treatment of primary snoring and mild to moderate sleep apnoea in dental sleep medicine
- Orthodontic correction of Angle Class II malocclusions
- Use as an anchorage appliance for orthodontic gap closure in the posterior region of the lower jaw

### Applications in general dentistry

The BioBiteCorrector® SA und MS versions without internal open coil spring are used as a lower jaw protrusion hinge in dental sleep medicine and in TMJ therapy. BioBiteCorrector® SA and MS are the first mandibular protrusion hinges made entirely of titanium.

The BioBiteCorrector® Sleep Appliance is used to treat primary snoring and mild to moderate sleep apnoea.

In TMJ therapy, the BioBiteCorrector® SA and MS versions are used for mandibular advancement splints.



## BioBiteCorrector® Applications



### Orthodontic applications

The BioBiteCorrector® (BBC) appliances are mainly used to correct an Angle II malocclusion in orthodontics.

Use of the BBC can avoid extraction of permanent teeth or even surgical corrections of Class II malocclusions.

#### **The fixed appliances:**

The fixed appliances (e.g. BBC Herbst/ BBC with Multibracket appliance) can be used for patients who are non-compliant in wearing removable devices or show low residual jaw growth, for adolescents and adults.

#### **The removable solutions:**

In combination with removable dental braces the BioBiteCorrector® hinge forms a modern functional orthodontic appliance.

The BioBiteCorrector® Twin Appliance combines high speaking and wearing comfort with reliable therapeutic success.

#### **Two treatment philosophies:**

The BioBiteCorrector® hinges are available with and without internal coil spring.

#### **Passive-rigid:**

The BioBiteCorrector® MS and SA versions (without compression spring) are largely based on the functional principles of the Herbst appliance. This passive-rigid appliance is able to precisely guide the mandible into bilateral Class I occlusion and therefore does not need coil springs.

#### **Hybrid appliances:**

The BioBiteCorrector® SP und FA versions (with internal compression spring) guarantee a certain amount of protrusion of the mandible due to their rigid parts, and their internal coil spring (240cN) also ensures gentle advancement.

## Advantages

- **Biocompatible Titanium**

The BBC designs are entirely manufactured of titanium and laser welded. Fixing screws and spacers are manufactured of titanium as well. BBC SP and BBC FA versions have an internal stainless steel spring.

- **Functional principle of the Herbst appliance without the use of coil springs**

The BBC MS and BBC SA appliance does not use coil springs, unlike most other intermaxillary non-compliance Class II appliances. The BioBite**Corrector**® is largely based on the functional principles of the Herbst-appliance.

- **Internal spring mechanism**

BBC SP and BBC FA versions advance the lower jaw with a gentle spring force. The internal stainless steel compression spring has a force of 240cN.

- **Direct Class I with precise adjustment of the mandible**

Using the C-shaped titanium spacers, which are clamped on the telescope bars, the mandible can be advanced easily and precisely.

- **Easy handling**

The BBC MS and BBC SP are supplied completely pre-assembled and ready to install. There is no need for orthodontists to assemble the device from various parts.

- **Multibracket appliance: Bands and Tubes are not required**

Thanks to the screwable connection, the BBC does not require bands on the molars for proper placement of the appliance.

- **Screw Connectors**

The BBC MS and BBC SP screw connectors guarantee a quick and easy inserting process. This design prevents any sliding on the wire and causes no pressure on the adjacent brackets.

- **Ball Joint Design for better comfort**

The ball joints enable lateral movements and sufficient opening of the mouth, improving wearing comfort.

- **Multi-telescope design**

This design ensures extended mobility without disengaging like the conventional Herbst-appliance.

- **Available in Two Sizes**

Standard is the most commonly used size; 23mm in length, extends up to 57mm. Small can be used if there is an extraction in the upper jaw; 19mm in length, extends up to 45mm.

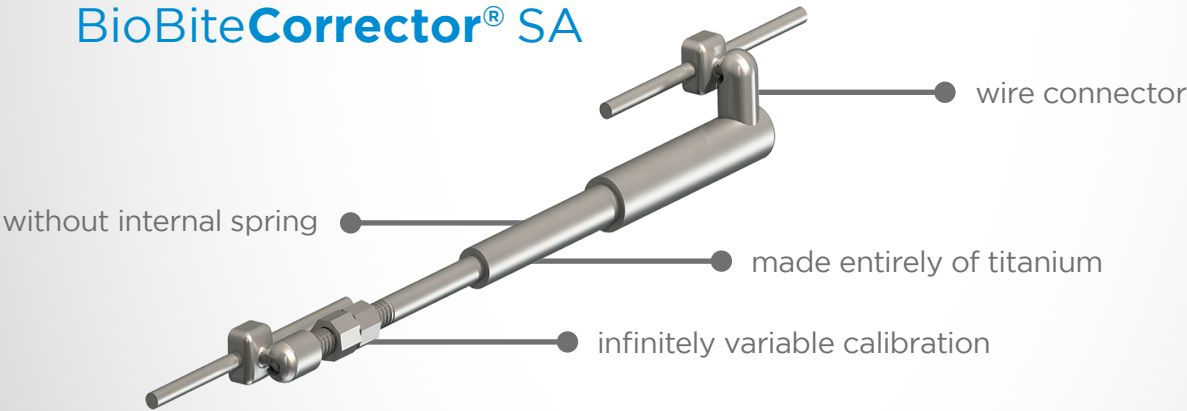
BioBiteCorrector® MS



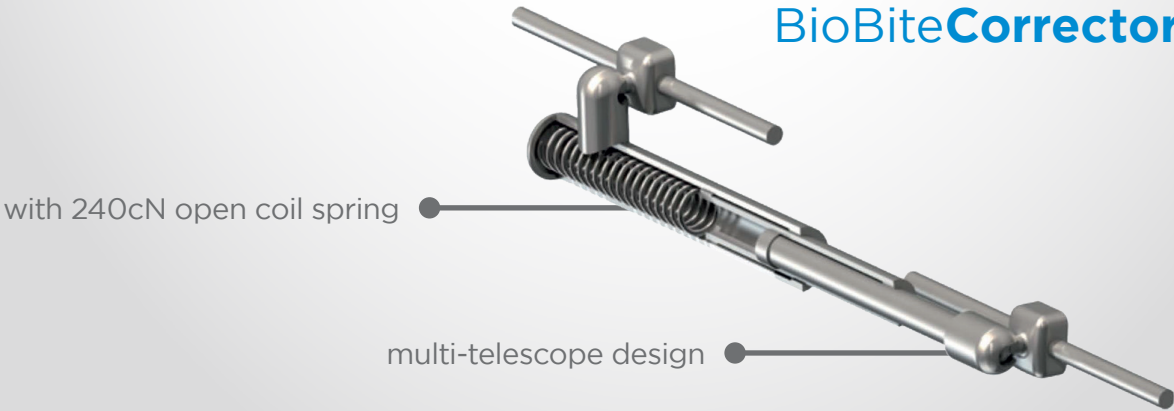
BioBiteCorrector® SP



BioBiteCorrector® SA



BioBiteCorrector® FA





## Features

### BioBiteCorrector® MS



- screwable connector
- without internal spring
- made entirely of titanium

### BioBiteCorrector® SP



- screwable connector
- with internal stainless steel spring

## BioBiteCorrector® MS & BioBiteCorrector® SP

BioBiteCorrector® versions MS (without compression spring) and SP (with compression spring) have a screw connector. These versions can be screwed to a square wire.

BioBiteCorrector® MS and SP versions are always placed interproximally due to their screw connectors. The screw connector is placed between the canine and the 1st premolar in the lower jaw and between the 1st molar and the 2nd premolar in the upper jaw.

The BioBiteCorrector® SP supports the advancement of the lower jaw with an internal coil spring. The BBC MS works based on the functional principles of the Herbst-appliance and therefore does not have an internal coil spring.

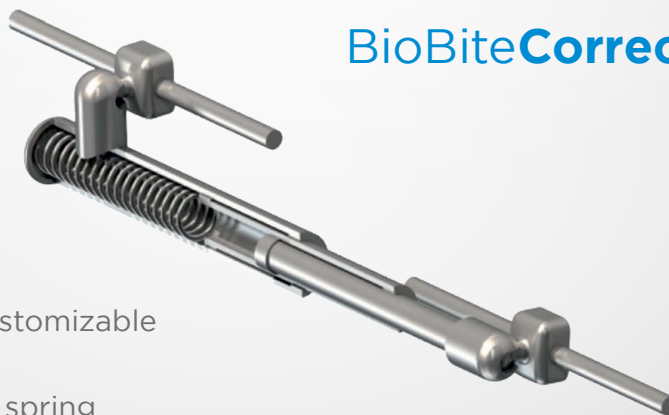
## Features

### BioBiteCorrector® SA



- without internal spring
- made entirely of titanium
- Infinitely variable calibration

### BioBiteCorrector® FA



- bondable, weldable and customizable wire connection
- with internal stainless steel spring

## BioBiteCorrector® SA & BioBiteCorrector® FA

Der BioBiteCorrector® SA (without internal spring) and the BioBiteCorrector® FA (with internal spring) designs have a flat wire connector. This connector can be directly polymerized into resin or fixed on special tubes (see BioBiteCorrector® Herbst appliance).

Thanks to the flat wire connector, the BioBiteCorrector® SA and FA versions are placed centrally on the 1st premolar in the lower jaw and on the 1st molar in the upper jaw. So these connectors do not have to be placed interproximally, like the screw connectors of the BBC SP and MS.

The BioBiteCorrector® FA supports the advancement of the lower jaw with an internal coil spring. The BBC SA works based on the functional principles of the Herbst-appliance and therefore does not have an internal coil spring.

## BioBiteCorrector® with multibracket appliance

The BioBiteCorrector® versions MS and SP with a screw connector can be easily attached to multibracket wire. This orthodontic combination is used for treatment of Angle Class II Malocclusion.



BioBiteCorrector® MS  
Without internal spring



BioBiteCorrector® SP  
With internal stainless steel spring

The BioBiteCorrector® MS as a passive-rigid appliance is able to precisely guide the mandible into bilateral Class I occlusion and therefore does not need coil springs.

The BioBiteCorrector® SP supports the advancement of the lower jaw with an internal coil spring.

### BBC MS appliance on a patient



Before placement  
of BBC

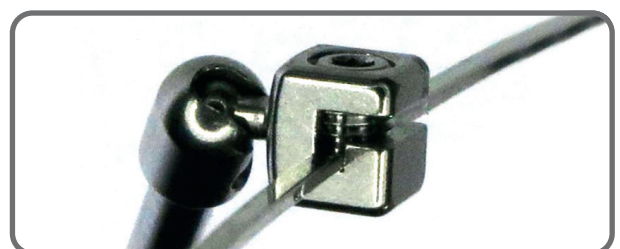


After placement  
of BBC



Class I after treatment

The BBC MS and BBC SP screw connectors guarantee a quick and easy inserting process. This design prevents any sliding on the wire and causes no pressure on the adjacent brackets.





## BioBiteCorrector® Twin

### The modern functional appliance

Die BioBiteCorrector® Twin (BBC-Twin) is a removable functional appliance for the correction of Class II malocclusion.



#### Advantages:

- Does not cause any tongue space restriction for high speaking comfort.
- The BBC Twin has no occlusal pads, for easy deep bite correction with high wearing comfort.
- The BBC Twin Appliance has the proven reliable BioBiteCorrector® telescope advantages.
- The result is high wearing and speaking comfort with reliable therapeutic success.

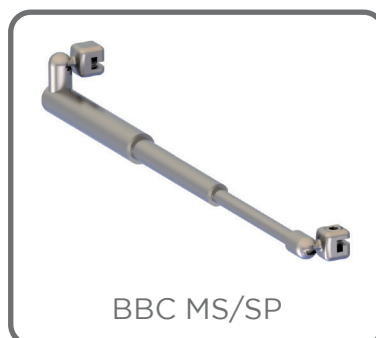
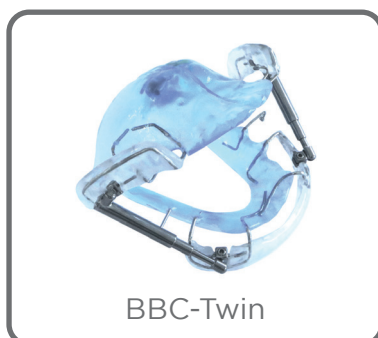
All BioBiteCorrector® (BBC) versions can be used to fabricate a BBC Twin appliance. The BioBiteCorrector® versions MS and SP are screw-connected to a square wire, which is polymerized into an active plate (Schwartz plate).

If patient compliance is insufficient, the BBC hinge can be unscrewed from the Schwartz plate and later fixed to a multi-bracket appliance on the same patient.

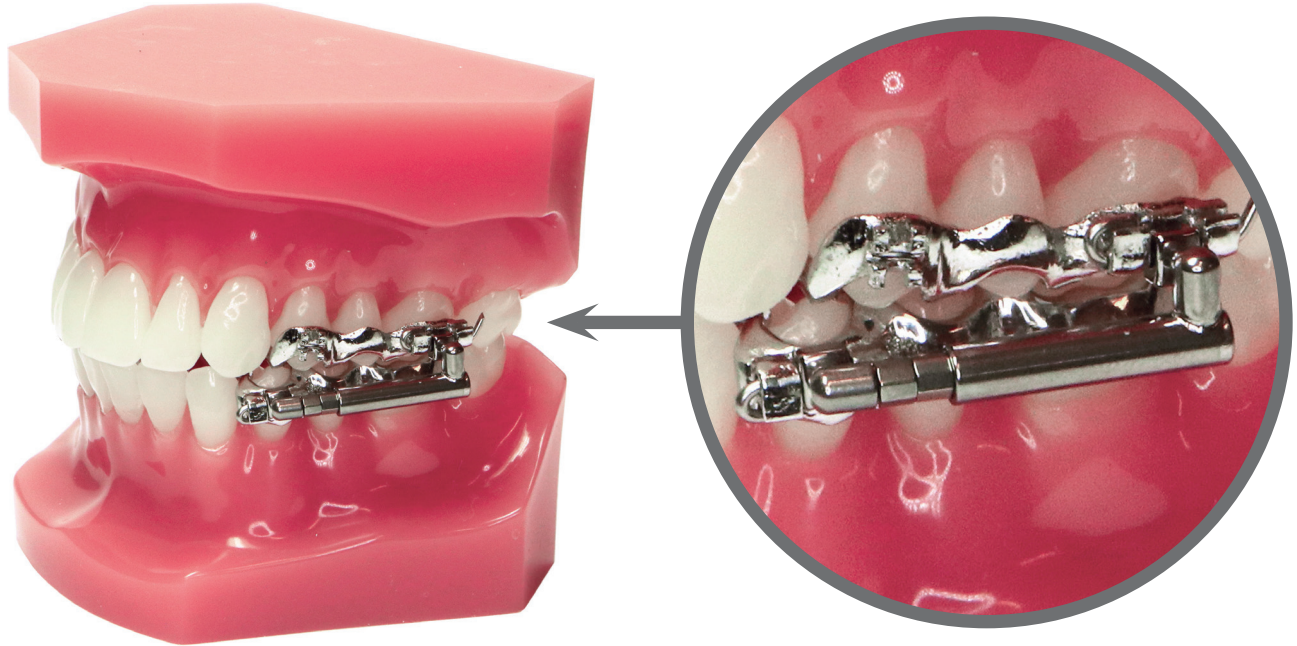
The BioBiteCorrector® SA (without compression spring) and the BioBiteCorrector® FA (with compression spring). Versions with a flat wire connector are directly polymerized into resin.

The flat wire connectors are placed centrally on the 1st premolar in the lower jaw and on the 1st molar in the upper jaw. They do not have to be placed interproximally like the screw connectors.

## Re-use on the same patient



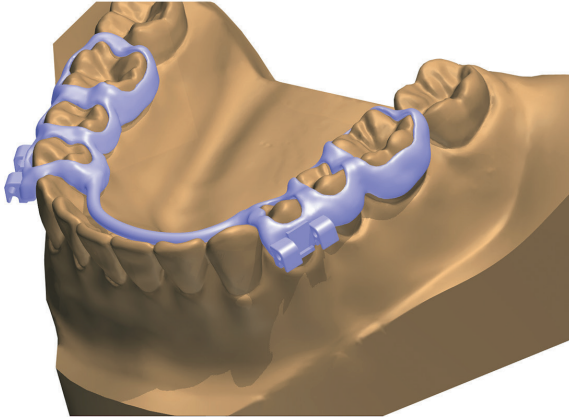
## BioBiteCorrector® Herbst The CAD/CAM BBC Herbst



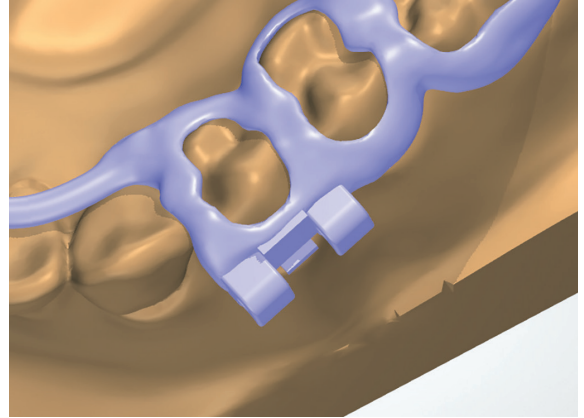
### Advantages:

- High wearing comfort thanks to flat design
- High patient acceptance
- Construction bite is not required
- All BBC components can be replaced chairside
- High speaking comfort
- Completely digital CAD/CAM manufacturing process
- Metal-3D printing
- BioBiteCorrector® SA and FA hinges can be combined with a BBC Herbst
- Reliable BioBiteCorrector® hinge benefits:
  - Ball joint design for better comfort
  - Ball joint design enables lateral movements and sufficient opening of the mouth, improving wearing comfort
  - Multi-telescope design ensures extended mobility without disengaging like the conventional Herbst appliance

## BioBiteCorrector® Herbst Placement in detail



Completely digital design



Detail view



Metal printed  
without a weld



Individually bending  
a stainless steel wire



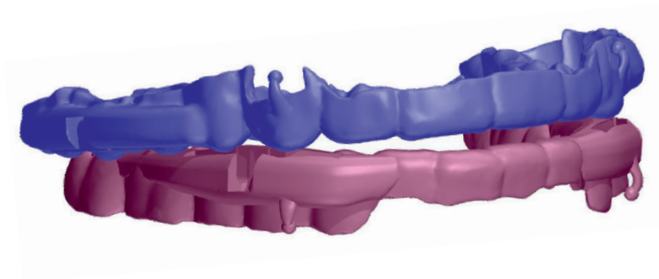
Stainless steel wire  
with BBC



Bending the distal end  
of the wire



## BioBiteCorrector® Sleep Appliance The CAD/CAM anti-snoring device



### Advantages:

- **Biocompatible titanium**

The BioBiteCorrector® Sleep Appliance is the world's first anti-snoring appliance featuring all-titanium mandibular protrusion hinges

- **Digital 3D-Design (CAD/CAM)**

The milled splints are designed as preferred by the therapist.

- Thermoactive flexibility
- MMA-free (0% residual monomer)
- Self-adjusting with memory effect

- **High speaking and wearing comfort**

- Low-level vertical bite opening
- Without unlocking process
- Unrestricted mouth opening

- **Direct adjustability**

With precise lower jaw adjustment by means of C-shaped spacers or infinitely variable calibration.

- **No tongue space restriction**

This design does not reduce the wearing comfort or lead to tongue retrusion.

- **Ball joints in the upper and lower jaws**

Enable lateral lower jaw movements and increase wearing comfort.

- **Multiple telescope**

This design ensures extended mobility without disengaging like the conventional Herbst-appliance.

For a Sleep Appliance (anti-snoring device), only the BioBiteCorrector® MS and BioBiteCorrector® SA versions are used. These BioBiteCorrector® versions have no internal compression spring.

## BioBite**Corrector**® with transparent aligner

All BioBite**Corrector**® (BBC) versions can be combined with a transparent aligner or splint. The BioBite**Corrector**® is a highly versatile hinge, suitable for retention devices, removable functional devices or sleep appliances.

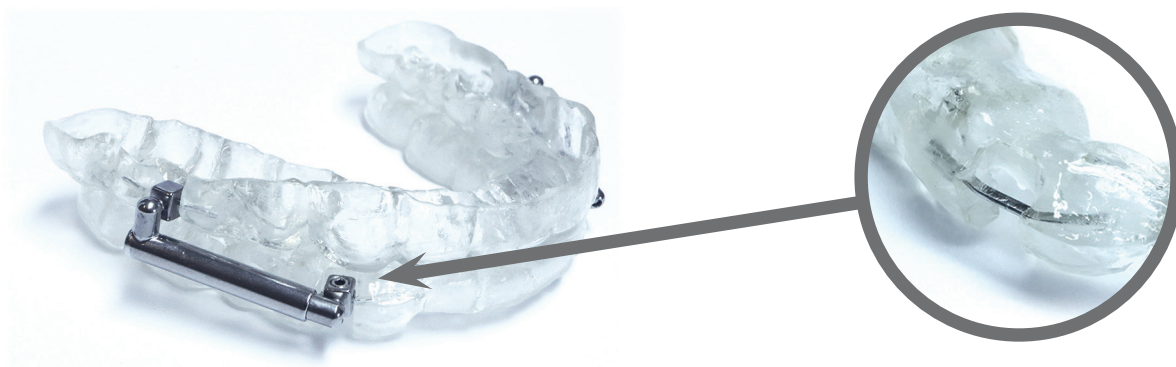


BioBite**Corrector**® versions MS (without compression spring) and SP (with compression spring) are screw-connected to a square wire, which is embedded in the splint. If necessary the BBC hinge can be unscrewed from the splint.

The BioBite**Corrector**® SA (without compression spring) and the BioBite**Corrector**® FA (with compression spring) versions with a flat wire connector are directly embedded in resin.

BBC MS and SA versions work based on the functional principles of the Herbst-appliance and therefore does not have an internal coil spring.

The splint can be fabricated using completely digital or conventional processes.



Connection in detail after unscrewing the BioBite**Corrector**®



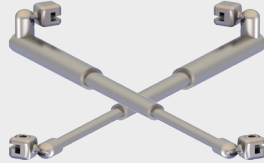
## BioBiteCorrector® MS

(without internal coil spring)  
Standard Size and Small Size

### BioBiteCorrector® MS 1 Pair

4 Titanium Fixing Screws

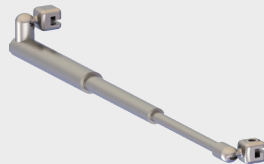
Standard Size  
Part no. 205-2015-11  
Small Size  
Part no. 205-2015-21



### BioBiteCorrector® MS Right

2 Titanium Fixing Screws

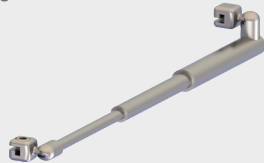
Standard Size  
Part no. 205-2015-12  
Small Size  
Part no. 205-2015-22



### BioBiteCorrector® MS Left

2 Titanium Fixing Screws

Standard Size  
Part no. 205-2015-13  
Small Size  
Part no. 205-2015-23



### BioBiteCorrector® MS-Kit

3 Pairs - BBC MS Standard  
20 Titanium Spacers  
Q Screw Handle  
Screwdriver Hex 20mm  
Part no. 205-2015-10



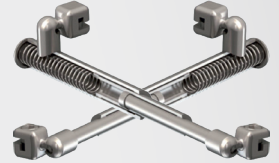
## BioBiteCorrector® SP

(with internal coil spring)  
Standard Size

### BioBiteCorrector® SP 1 Pair

4 Titanium Fixing Screws

Standard Size  
Part no. 205-2016-11



### BioBiteCorrector® SP Right

2 Titanium Fixing Screws

Standard Size  
Part no. 205-2016-12



### BioBiteCorrector® SP Left

2 Titanium Fixing Screws

Standard Size  
Part no. 205-2016-13



### BioBiteCorrector® SP-Kit

3 Pairs - BBC SP Standard  
20 Titanium Spacers  
Q Screw Handle  
Screwdriver Hex 20mm  
Part no. 205-2016-10



## Accessories

### Titanium spacer

20 pieces  
1,0 mm Part no. 205-2010-32  
1,5 mm Part no. 205-2010-33



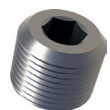
### BBC Open End Wrench

1 piece for BBC SA  
Part no. 205-2019-55



### BBC Titanium Fixing Screw

10 pieces  
Part no. 205-2010-44



### BBC Screwdriver

1 piece for Q Screw Handle  
20 mm Part no. 205-Q2113  
30 mm Part no. 205-Q2113L



### Q Screw Handle

1 piece  
Part no. 205-Q2112



### BBC Box

1 piece  
Part no. 205-BOX13

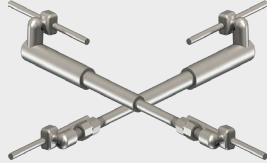


## BioBiteCorrector® SA

(without coil spring)  
Standard Size

### BioBiteCorrector® SA 1 Pair

Part no. 205-2015-31

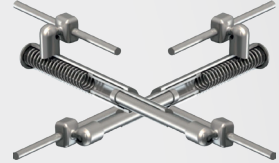


## BioBiteCorrector® FA

(with internal coil spring)  
Standard Size

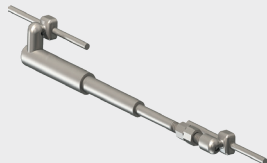
### BioBiteCorrector® FA 1 Pair

Part no. 205-2016-31



### BioBiteCorrector® SA Right

Part no. 205-2015-32



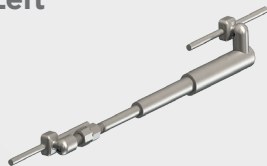
### BioBiteCorrector® FA Right

Part no. 205-2016-32



### BioBiteCorrector® SA Left

Part no. 205-2015-33



### BioBiteCorrector® FA Left

Part no. 205-2016-33



## Accessories

### BBC MS Body with screw

4 pieces, Auxiliary element  
for the laboratory  
Part no. 205-2018-11



### BBC Square Wire

4 piece, 0,25 x 0,25 x 50 mm  
Auxiliary element for the laboratory  
Part no. 205-W025-18



---

**BioBiteCorrector® SA & FA products are only available through our dental laboratory service, as components of a BBC Herbst Appliance or BBC Sleep Appliance and as replacement parts.**

---

For further information visit: [www.bbc-orthotec.de](http://www.bbc-orthotec.de)

• Clinical examples • Patient information and education • Installation video • Direction for use



**Distributor:**

BBC-Orthotec GmbH, Innsbrucker Str. 2, D-83435 Bad Reichenhall  
+49 8651 9650099 | [www.bbc-orthotec.de](http://www.bbc-orthotec.de)

Manufacturer: Trinon Titanium GmbH, Augartenstr. 1, D-76137 Karlsruhe